

## Grinder Pump Conversion Continues—100 To Go!



To date we have converted **258** grinder pumps. Thank you citizens for your cooperation in the conversion. As we have stated in previous newsletters, it is the District's intention to

convert all three hundred fifty-seven grinder pumps by 2013. Our biggest concern is the existing grinder pumps lasting until the conversion is made to the new style grinder pumps. In talking to customers who have done the conversion, a lot of them mention that they thought it would be much more expensive than it was. We also notice that many of the old pumps removed during the conversion have problems that could have caused them to fail soon or not pump efficiently. You will also notice by the pictures that you have the choice of mounting the new control box on your house or on a post by the grinder pump basin in your yard. Customers tell us that mounting a post by your grinder pump basin is much cheaper because the new wires do not have to be trenched in your yard from your house to the grinder pump basin. So, don't wait for a problem, be proactive and call your electrician today—estimates are free and some are given over the phone! As we have stated before, we will be doing this on a volunteer basis. However, at some point it will be mandatory to convert existing wiring to run the new style of grinder pumps available today. Thank you in advance for your cooperation in a successful conversion of all three hundred fifty-seven grinder pumps!



## Office Hours

Monday, Wednesday, Thursday, and Friday  
8:00 a.m. to noon

Service Operators are on duty  
Monday-Friday  
8:00 a.m.- 4:30 p.m.

- The Commission's regular monthly meeting is generally held the first Monday of each month. Agendas are posted at the Dunn Town Hall, Quick Stop, and the Sanitary District Office.
- Please continue to send your sewer user charge payments directly to the Sanitary District office to be processed. The address to send your payments to is:  
PO Box 486  
Stoughton, WI 53589
- For those of you who **share grinder pumps**, we believe that \$17 per home, per year is accurate for the power cost to run the grinder pump(s). If you share a grinder pump with your neighbor and the electricity to run the grinder pump comes from their home, you should be paying your neighbor your share of the electricity to run the grinder pump. It is your job to be a good neighbor.



## Grinder Pump Basin and Winter Maintenance



Please try to keep area around the grinder pump basin clear of snow. The vent pipe should be free of snow to function properly. If snow and ice accumulate on top of the grinder pump basin it makes it difficult for our service operators to make repairs should they be necessary.



The Commissioners and Staff of the District wish each of you a Joyous Holiday Season and a Safe and Happy New Year!

KEGONSA SANITARY DISTRICT  
PO BOX 486  
2240 US HWY 51  
STOUGHTON, WI 53589  
(608) 873-0230  
800-474-0230  
SEWER EMERGENCY (608) 843-6026

## Kegonsa Sanitary District

### No Increase in User Charge for 2012

### A Message From the District's Commissioners

**Mike Sherry, President**  
**Dan Hillery, Secretary**  
**Mike Petersen, Treasurer**

**December 2011**

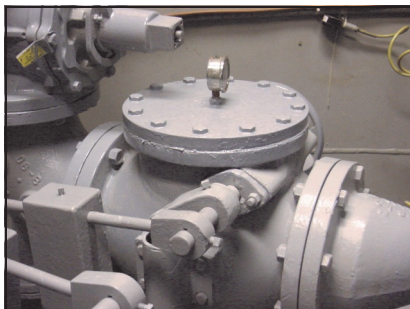


## 2012 Budget Approved

On November 1, 2011, we passed the District's 2012 budget. With the system being twenty-three years old, we continue to have significant maintenance costs in maintaining the system. We are also in the process of converting all of the grinder pumps in the system which has increased labor and material costs. Also, the interest revenue on our Emergency Reserve Fund continues to decrease with CD/Money Market rates continuing to drop. However, we were able to put together a budget with no increase in the user charge. The user charge will remain at \$32.00 per RUE for 2012. A RUE is the unit of measurement which is the normal amount of sewage to the system from a single-family residence. The user charge delinquency rate for 2011 was approximately 6% of the amount billed. The District now serves 546 residential and 22 commercial customers. We appreciate the timely payments by the vast majority of our customers.

## Maintenance in 2011

This year seven manholes were sealed to keep groundwater from entering the system, the main station drywell was painted, and **ninety** extreme grinder pumps were purchased. All of the maintenance costs total approximately \$172,000. Money to fund these projects came from the Emergency Reserve Fund and monies collected through the sewer user charge.



## Automatic Bill Payment Program

We are pleased to be able to offer you this convenient way to pay your quarterly sewer user charges. Currently, 204 customers are using the program. Thank you to all who continue to use the program! It is more cost effective for the District to process your user charge payment electronically, than processing your payment by check. We are trying everything to reduce bank fees to save **you** money on your user charge. If applicable, with the form enclosed with this newsletter, you can sign up for electronic payment of your charges. If you have questions about the program, contact our clerk, Cindy Lehr, she will be happy to answer any questions you may have about the program. If you choose to sign up, this service will start with the March 1, 2012 billing. There are no charges for this service, but just like when you pay with a check, any transfers refused because of insufficient funds or a closed account will incur a service charge of \$25.

### QUESTIONS?

Kegonsa Sanitary District  
PO Box 486  
2240 US HWY 51  
Stoughton, WI 53589  
Phone: 608-873-0230  
800-474-0230

Sewer Emergency: 608-843-6026  
info@KegonsaSanitaryDistrict.com

The District is now a link on the Town of Dunn's Website!

Click on: Services/Sanitary Districts/Sanitary District #2 (Kegonsa Sanitary). Once there you will find our contact information and a link to our latest Newsletter.



## Clearwater Entering System

During the past year we found seven manholes that were leaking groundwater into the system. All seven manholes were re-sealed. Just for comparison, the first three quarters in 2011 the District pumped 39,756,981 gallons of wastewater to Madison Metropolitan Sewerage District (MMSD). In 2010, the first three quarters we pumped 44,895,085 gallons. We are making progress, but we have a long way to go. So, what can you do?

Keep your home leak-free by repairing dripping faucets, toilet valves, and showerheads. In most cases, fixture replacement parts don't require a major investment and can be installed by do-it-yourselfers.

If your toilet is running constantly, you could be wasting **200 gallons** of water or more every day. If your toilet is leaking, the cause is most often an old, faulty toilet flapper. Over time, this inexpensive rubber part decays, or minerals build up on it. It's usually best to replace the whole rubber flapper—a relatively easy, inexpensive do-it-yourself project that pays for itself in no time.

One way to find out if you have a toilet leak is to place a drop of food coloring in the toilet tank. If the color shows up in the bowl within 15 minutes without flushing, you have a leak. Make sure to flush immediately after this experiment to avoid staining the tank. (from EPA WaterSense Publication)



Please check your sump pumps to be sure that they are not pumping water into the sewer system. Another point to remember is that we pay Madison Metropolitan Sewerage District for each gallon of flow we send them. If the flows increase, we will be paying MMSD more, and that means we may need to raise the sewer rate we charge you again. We are making progress, but everyone in the District needs to address this problem!